

**ISSUE:**

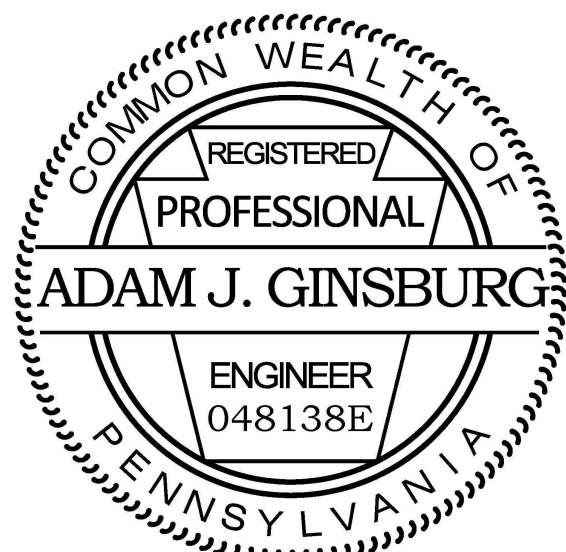
Issued for Permit  
08.05.2016



# BASE<sup>4</sup>

BASE4  
9858 GLADES ROAD, #237  
BOCA RATON, FLORIDA 33434  
1.720.72BASE4 [www.base-4.com](http://www.base-4.com)

JEFF GAITHER, AIA  
4101 Woodlynne Ln  
Orlando, FL 32812



**ADAM GINSBURG**  
12641 YARDLEY DRIVE  
BOCA RATON, FL 33428

PROJECT: B4-067-1603

## Hampton Inn & Suites

New Stanton, PA 15672

OWNER

Stanton Hospitality LLC

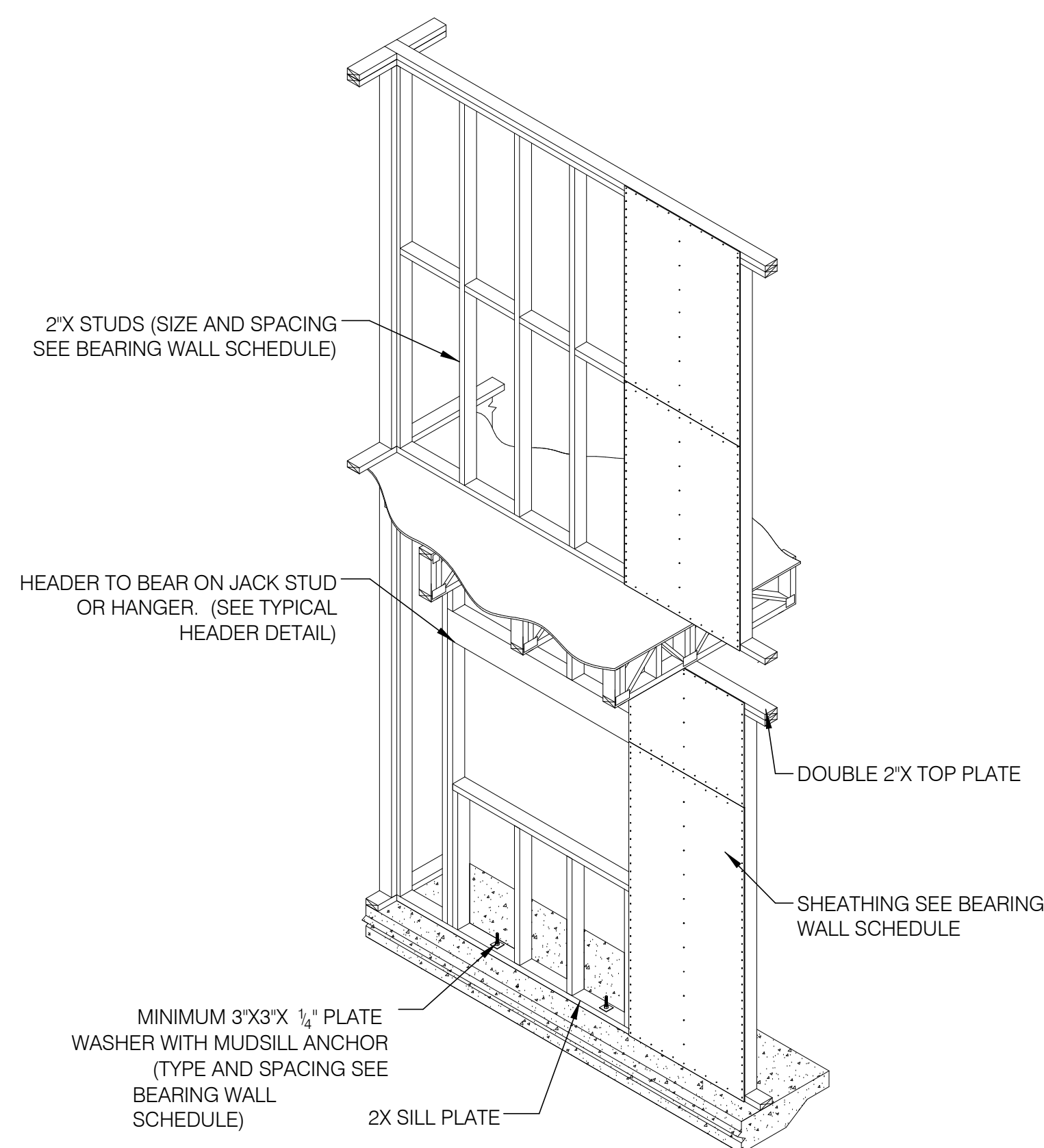
THESE DRAWINGS ARE FOR REVIEW OF DESIGN AND SCOPE OF DESCRIPTION ONLY. NO REPRESENTATION IS MADE TO THE ACCURACY OF THE DRAWINGS WITH RESPECT TO EXISTING DIMENSIONS OR CONDITIONS. ALL CONSULTANTS AND CONTRACTORS MUST VERIFY ANY AND ALL DIMENSIONS AND CONDITIONS WHICH ARE CRITICAL TO THEIR WORK. THESE DRAWINGS ARE INSTRUMENTS OF SERVICE AND ARE THE INTELLECTUAL PROPERTY OF JMAC ARCHITECTS. ANY UNAUTHORIZED USE OR REPRODUCTION IS PROHIBITED.

[illegible]

## DETAILS

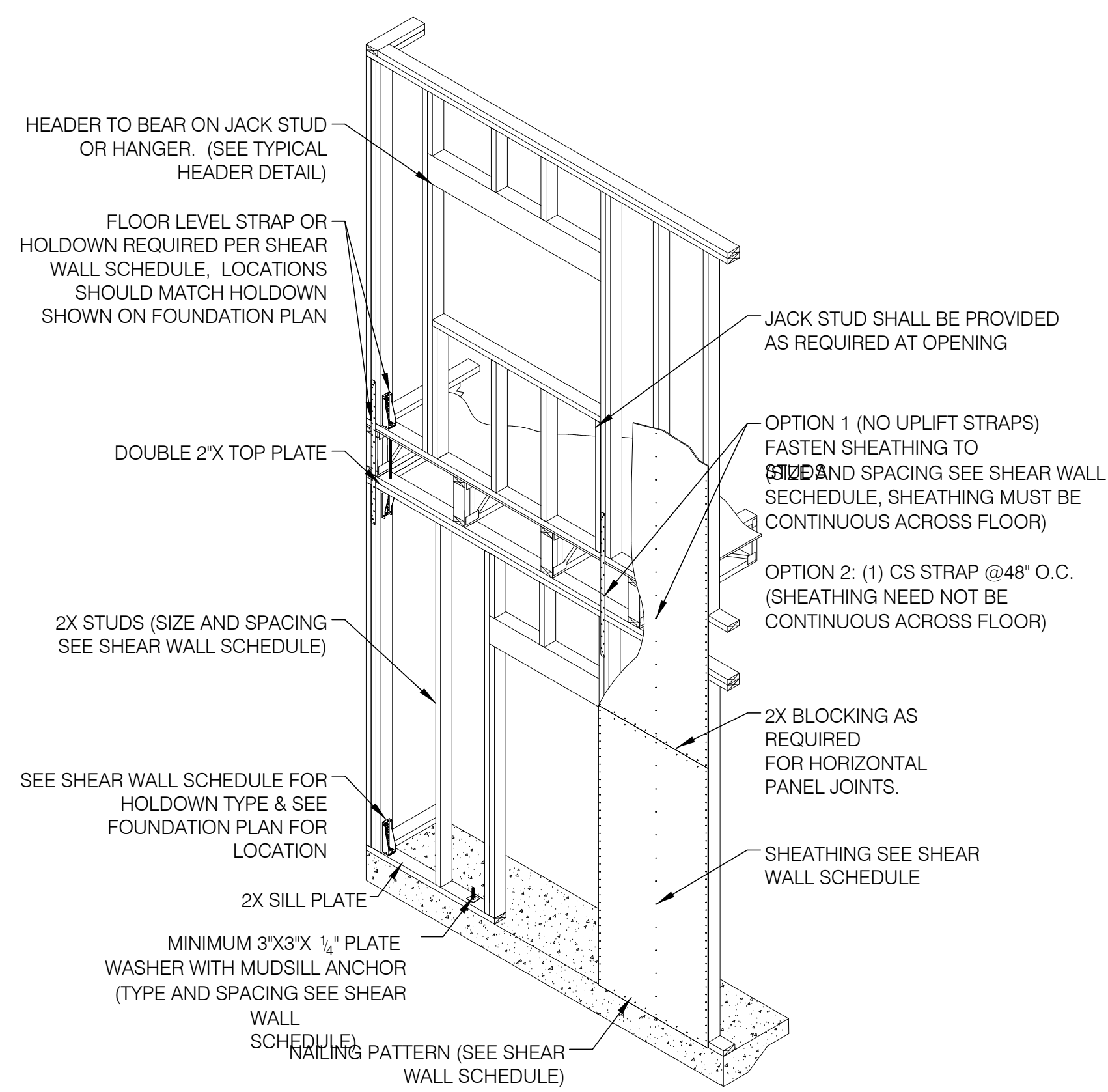
$$1/2'' = 1'-0''$$

S-604



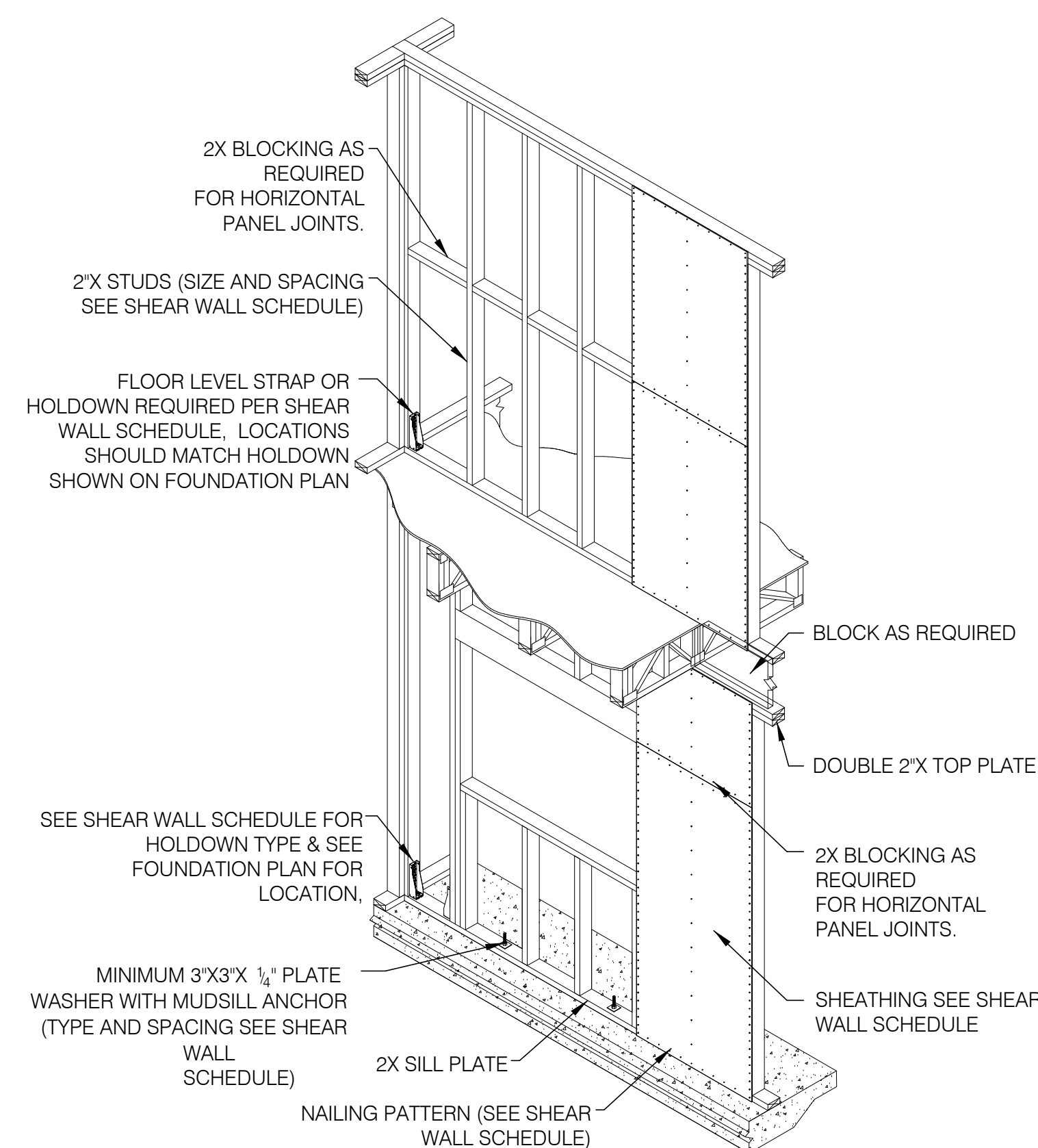
TYP. BEARING WALL FRAMING DETAIL

SCALE 1/8"=1'-0"



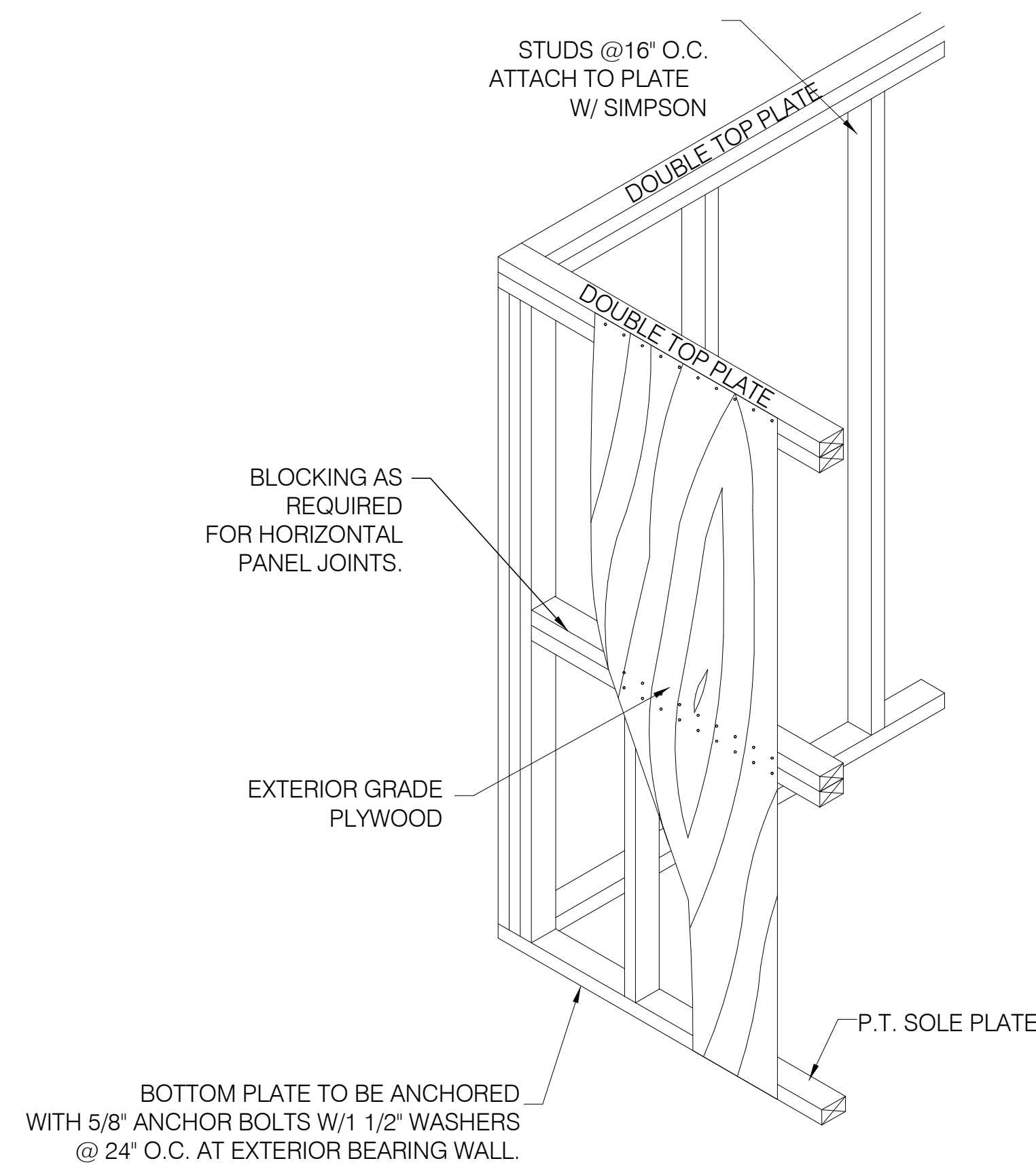
TYP. EXT. SHEAR WALL FRAMING DETAIL

SCALE 1/8"=1'-0"



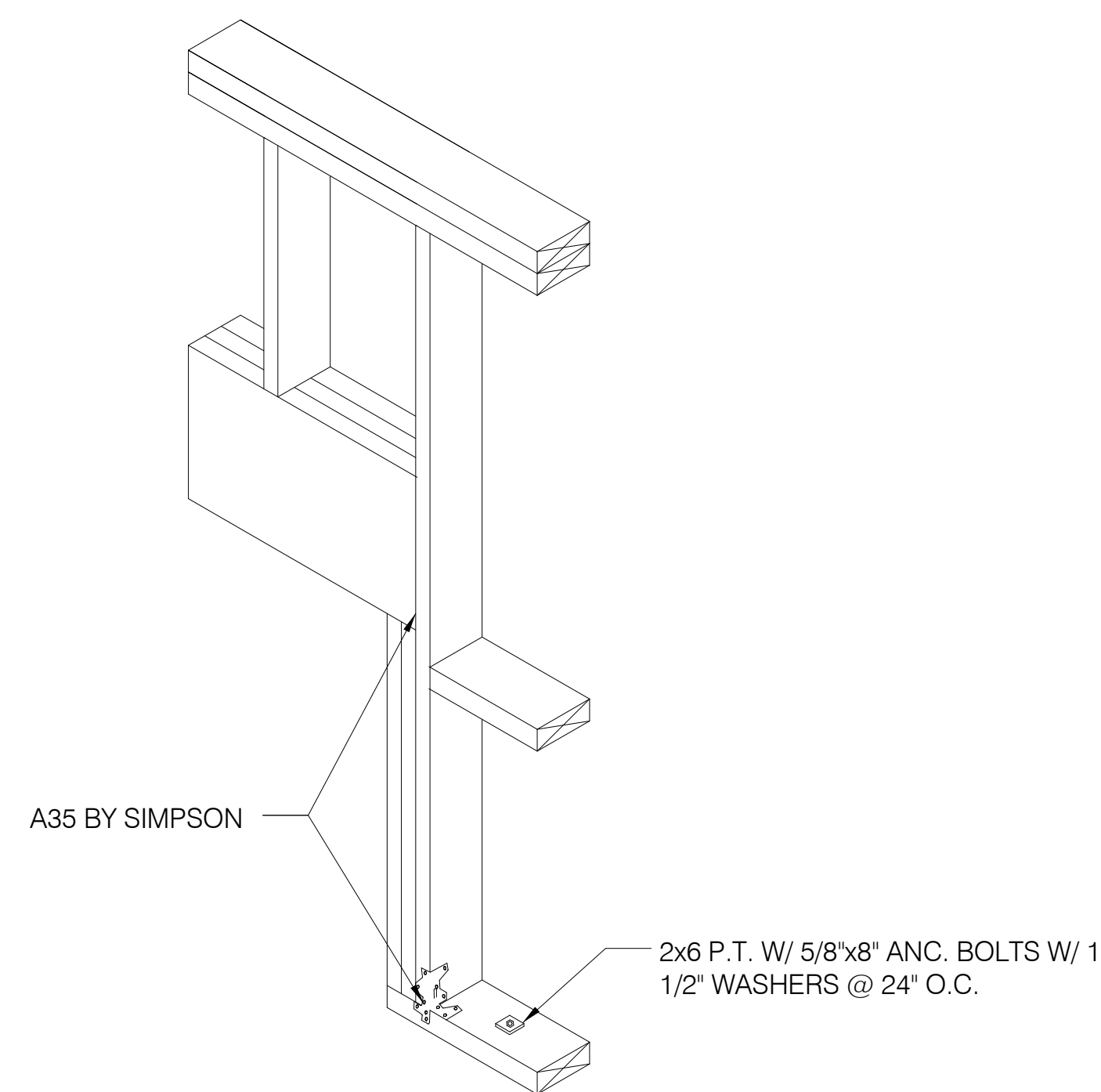
TYP. INT. BEARING SHEAR WALL FRAMING DETAIL

SCALE 1/8"=1'-0"



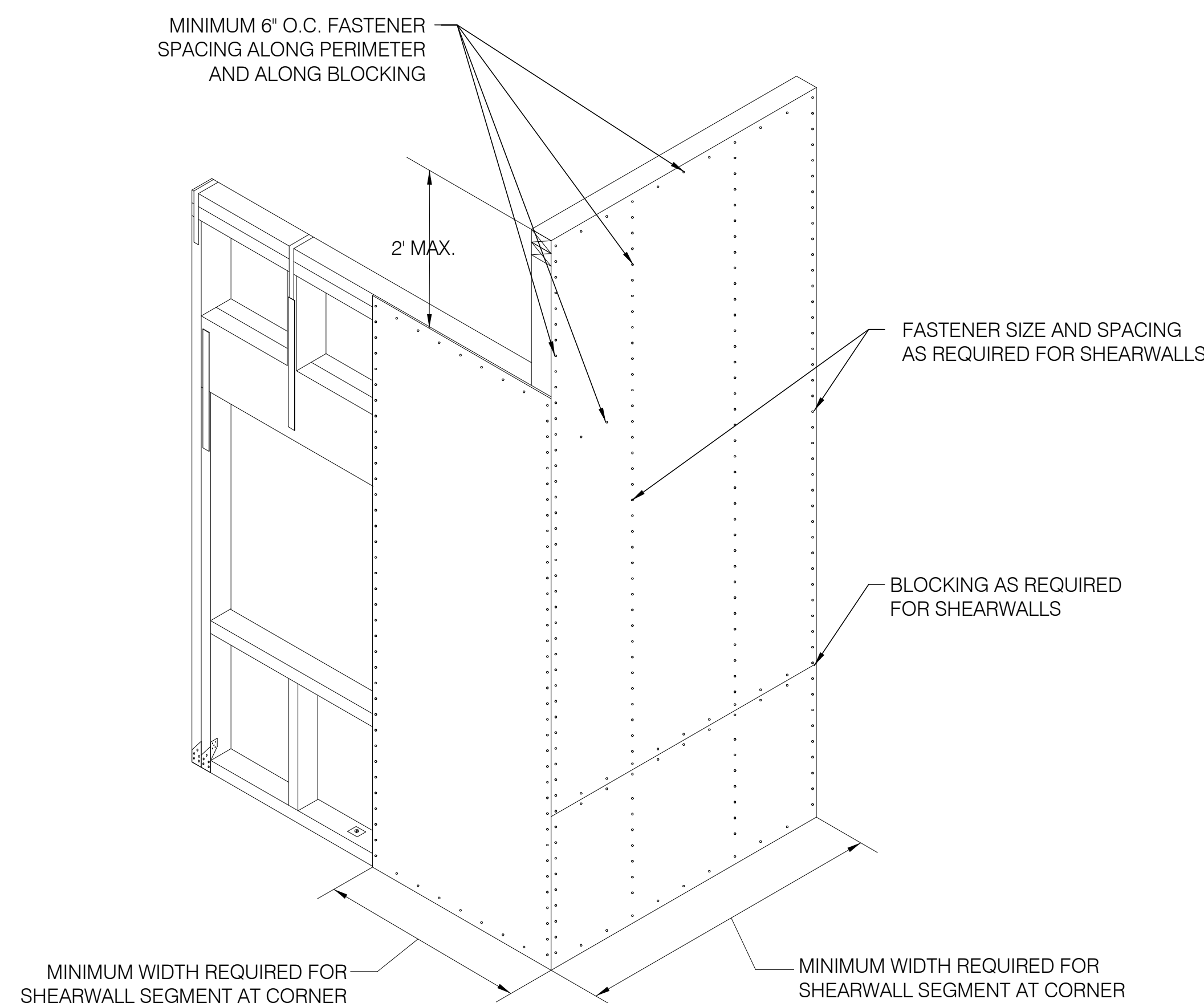
TYP. WOOD FRAME DETAIL

SCALE 1/4"=1'-0"



### TYP. BEARING WALL HEADER DETAIL

N.T.S.



### TYP. WOOD STRUCTURAL PANELS AT BUILDING CORNER

SCALE 1/4"=1'-0"